



THE GOLD BOOK

CHARLES GREEN

SINCE 1824



The year that Beethoven wrote his Ninth Symphony with its beautiful Ode to Joy. George IV was King of England, Charles X of France and in the USA James Monroe was President. That same year in Birmingham, England, Charles Green was a Jeweller.

The company has remained in the hands of the Green family for six generations and, to this day, manufactures in Birmingham's Jewellery Quarter.

Over the last two hundred years Charles Green has become synonymous with quality, hand crafted, British Jewellery.

Charles Green jewellery is created to last for generations.

Tom Green
Chairman



OVAL SIGNET RINGS



S10H



S9H



S11H



S35H



S32H



S33H



S30H



S72H

SIGNET CODE	DESCRIPTION	9ct Y	18ct Y
S10H	Oval 10x9mm Head	•	
S9H	Oval 11x10mm Head	•	•
S11H	Oval 11.5x10.5mm Head	•	•
S35H	Oval 12.5x11.5mm Head	•	•
S32H	Oval 14.5x12.5mm Head	•	•
S33H	Oval 15x13mm Head	•	
S30H	Oval 16x13mm Head	•	•
S72H	Oval 19x15mm Head	•	

CUSHION SIGNET RINGS



S12H



S13H



S37H



S36H

SIGNET CODE	DESCRIPTION	9ct Y	18ct Y
S12H	Cushion 9x9mm Head	•	
S13H	Cushion 10x10mm Head	•	•
S37H	Cushion 13x12mm Head	•	
S36H	Cushion 14x13mm Head	•	•

STONE SET SIGNET RINGS

We can set the following stones into our signet rings; onyx, bloodstone, lapis lazuli, cornelian, sardonyx and grey onyx.



S46H/P



S33H/C



S33H/O



S36H/B

SIGNET CODE	DESCRIPTION	9ct Y	18ct Y
S46H/P	Oval 13.5x11mm Head 11x9mm Stone - Lapis shown	•	
S33H/C	Oval 15x13mm Head 13x11mm Stone - Cornelian shown	•	
S33H/O	Oval 15x13mm Head 13x11mm Stone - Onyx shown	•	
S36H/B	Cushion 14x13mm 12x11.5mm Stone - Bloodstone shown	•	

Stocked items (•) are ready for dispatch within 10 working days and an extra 10-15 working days for diamond set, hand engraved or stone set. Most other alloys are available up to 30 working days.



CUFFLINKS

Tailored suit, polished shoes, crisp shirt; today's Gentleman is not completely dressed without a pair of handmade British cufflinks. Stamped in solid gold and available with a bar or chain fitting, our cufflinks are designed to compliment and add a subtle touch of class to formal and work attire.



CL61L (Bar)
CL6L (Chain)



CL371H (Bar)
CL37H (Chain)



CL91L (Bar)
CL9L (Chain)



CL61H (Bar)
CL6H (Chain)



CL371HD (Bar)
CL37HD (Chain)



CL91H (Bar)
CL9H (Chain)



CL61H/E1 (Bar)
CL6H/E1 (Chain)



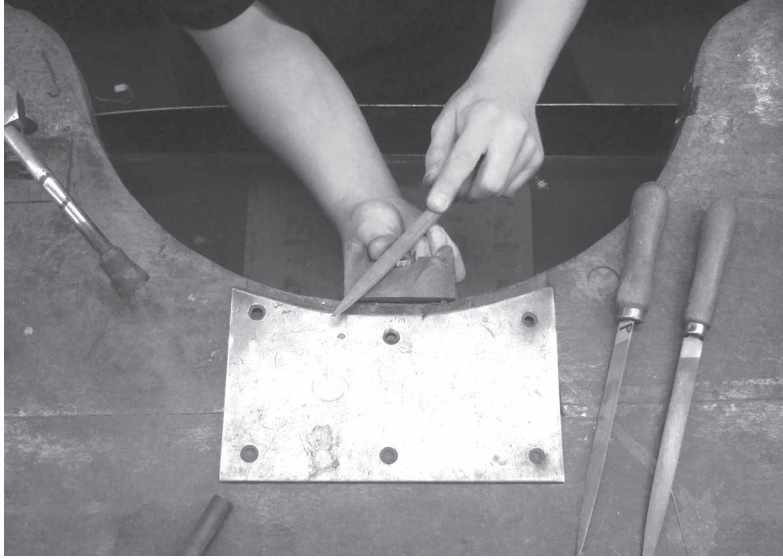
CL371HD/E5 (Bar)
CL37HD/E5 (Chain)



HAND ENGRAVED
(See page 22 for more information)

CUFFLINK CODE	DESCRIPTION	9ct Y	18ct Y
CL61L or CL6L	19x13mm Oval Light	•	
CL371H or CL37H	17x12mm Oval Heavy	•	
CL91L or CL9L	16x11mm Cut Corner Light	•	
CL61H or CL6H	19x13mm Oval Heavy	•	•
CL371HD or CL37HD	17x12mm Oval Domed Heavy	•	•
CL91H or CL9H	16x11mm Cut Corner Heavy	•	
CL61H/E1 or CL6H/E1	19x13mm Oval Heavy with Hand Engraving	•	•
CL371HD/E5 or CL37HD/E5	17x12mm Oval Domed Heavy with Hand Engraving	•	•
HAND ENGRAVED	Hand engraved / Monogram		

Stocked items (•) are ready for dispatch within 10 working days and an extra 10-15 working days for diamond set, hand engraved or stone set. Most other alloys are available up to 30 working days.



PLAIN LOCKETS



L181



L202



L207



L182



L204

LOCKET CODE	DESCRIPTION	9ct Y	9ct W	9ct R	18ct Y	18ct W	18ct R
L181	Small oval locket 16x13mm	•	•	•	•	•	•
L202	Medium oval locket 25x19mm	•	•	•	•	•	•
L207	Large oval locket 28x23mm	•			•		
L182	Small heart locket 14x14mm	•	•	•	•	•	•
L204	Medium heart locket 21x23mm	•	•	•	•	•	•

DIAMOND SET LOCKETS



Bails are available with micro claw set G/VS diamonds on all lockets using the suffix /DB, e.g L181/DB



L181/DB



L181/D179



L202/D43



L202B/D359



L202/D164



L181/D3



L202/D2



L202B/D313



L204B/D312

ENGRAVED LOCKETS



L202/E38

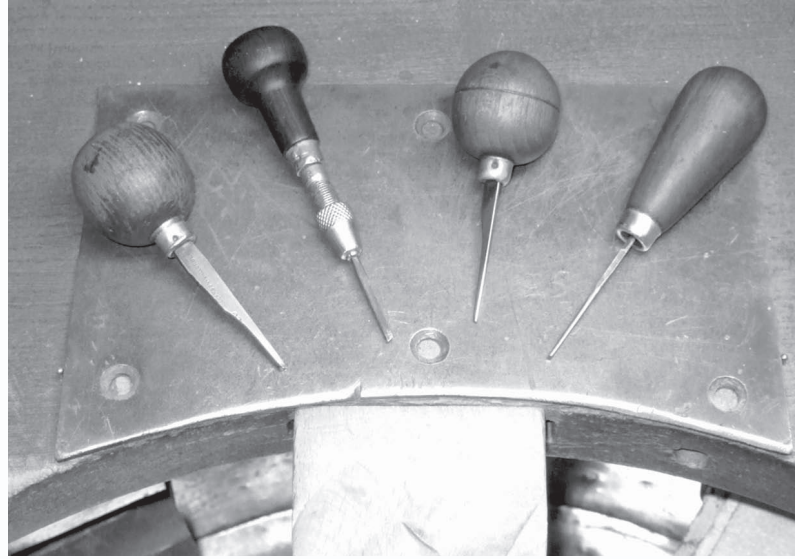
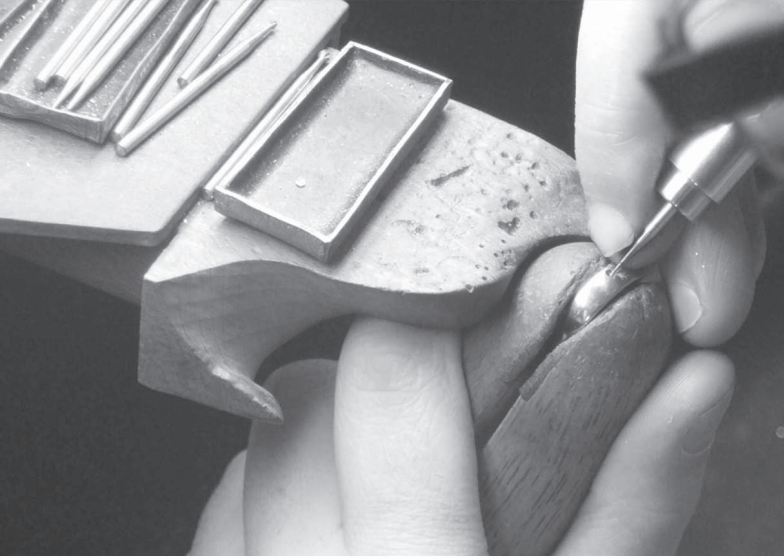


L207/E41



L202/E112

Stocked items (•) are ready for dispatch within 10 working days and an extra 10-15 working days for diamond set or hand engraved. Most other alloys are available up to 30 working days.



PLAIN CROSSES



X918



X960



X876



X854



X855



X962

CROSS CODE	DESCRIPTION	9ct Y	9ct W	9ct R	18ct Y
X918	Stamped Cross 16mmx11mm	•	•	•	•
X960	Stamped cross 18mmx12mm	•	•	•	•
X876	Stamped cross 25mmx16mm	•	•	•	•
X854	Stamped cross 27mmx17mm	•	•	•	•
X855	Stamped cross 32mmx20mm	•	•	•	•
X962	Stamped cross 27mmx18mm	•	•	•	•

CROSS DESIGNS



X918/D1 (•)



X960/D192 (•)



X960/D234 (•)



X808/CY



X835



X876/D225 (•)



X962/E162 (•)



X962/D222 (•)



X942



X922



X922/E124



X922/E127

(•) Indicates stocked item as per table on previous page.
Most other designs are available up to 30 working days.



BANGLES

Delicate and elegant on the wrist, our wide range of Ladies' wristwear provide a perfect finishing touch to any outfit for that special occasion. We offer a wide range of bangles and bracelets, from plain court shapes to heavily diamond set statement pieces.



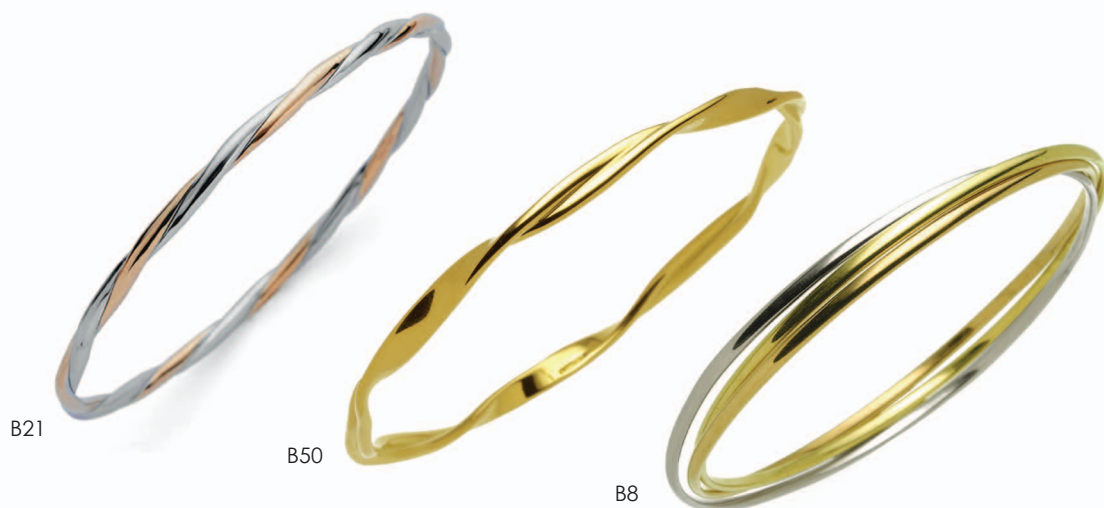
PLAIN BANGLES



BANGLE CODE	DESCRIPTION	9ct Y	9ct W
B89	Hinged bangle - 6mm wide, court profile	•	
B52	Solid bangle - 3mm wide, court profile	•	•
B54	Solid bangle - 4mm wide, court profile	•	•
B4	Solid bangle - 3mm wide, 'D' shape profile	•	•

Stocked items (•) are ready for dispatch within 10 working days and an extra 10-15 working days for diamond set or hand engraved. Most other alloys are available up to 30 working days.

DESIGNER BANGLES



BANGLE CODE	DESCRIPTION	9Y	9RW	9YRW
B21	Two colour twist bangle - 3mm wide		•	
B50	Twist bangle - 4mm wide	•		
B8	Three colour Russian bangle - 2.3mm wide			•

DIAMOND SET BANGLES



BANGLE CODE	DESCRIPTION	18ct W
B162/D335	Hinged Bangle set with .27cts	•
B162/D337	Hinged Bangle set with .87cts	•
B162/D338	Hinged Bangle set with 1.59cts	•
B164/D346	Hinged Bangle set with 2.22cts	•

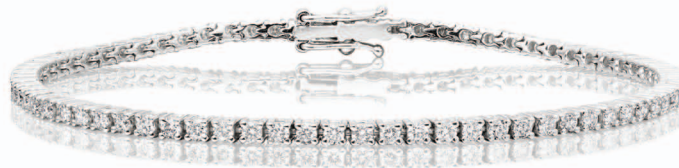
TENNIS BRACELETS



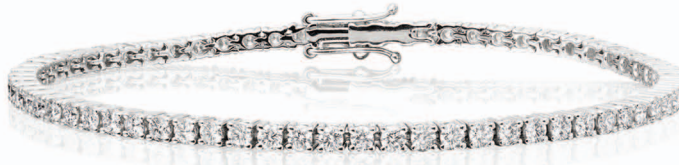
CB1001



CB1002



CB1003



CB1004



CB1005

BRACELET CODE	DESCRIPTION	18ct Y	18ct W
CB1001	Tennis Bracelet set with .98cts	•	•
CB1002	Tennis Bracelet set with 1.60cts	•	•
CB1003	Tennis Bracelet set with 2.19cts	•	•
CB1004	Tennis Bracelet set with 2.68cts	•	•
CB1005	Tennis Bracelet set with 3.30cts	•	•

Stocked items (•) are ready for dispatch within 21 working days. Most other alloys are available upon request. Please note calibrated diamonds are used in these tennis bracelets.